

PARTS LEGEND

NSP-350F2 - 20°, 502101

1	501300	4	S.H.C.S. 1/4-20 x 1-1/4"	37	092174	1	O-Ring
2	502082	1	Blade Seal	38	501976	1	Sequential Trigger
▲ 3	502091	1	T.H.S.C.S. 1/4 -20 x 3/4"	39	501008	1	Lever, Bottom Trip
4	501752	1	Air Deflector	40	402669	1	Pin, Trigger
5	501986	1	Top Cap	41	501010	1	Trigger
*6	501862	1	Cap Seal	42	501009	1	Spirol Pin
7	500754	1	Spacer, Exhaust	43	402668	1	Retaining Washer
8	500744	1	Stop, Piston	44	501608	1	Grooved Pin
9	500743	1	Spring, Valve	45	502079	1	Nose 20°
10	500742	1	Seat, Spring	46	502083	1	Follower
*11	091986	1	O-Ring	▲47	501997	4	S.H.C.S. 5/16-18 x 1"
12	501837	1	Piston, Valve	48	501058	1	Upper W.C.E.
*13	502089	3	O-Ring	49	501071	1	Spring, W.C.E.
*14	501861	1	O-Ring	50	500728	1	Lower W.C.E.
*15	502104	1	O-Ring, Piston	51	404800	1	Washer
16	501979	1	Piston	52	502097	1	Lock Washer
■ *17	501980	1	Driver Blade	53	091618	1	S.H.C.S. 1/4-20 x 1/2"
18	501540	1	Sleeve	▲54	501567	2	Screw 1/4-28 x 3/4"
*19	500249	1	O-Ring	55	502085	1	Nail Cover
20	500779	1	Flange, Sleeve	56	501479	1	Spring
*21	501002	1	O-Ring	57	092037	1	Locknut, 10-32
*22	500866	1	Bumper	58	502113	1	Lock Nut, 6-32
23	502124	1	Housing (with roll pin)	59	502098	2	Wear Strip
24	501023	1	Grip, Handle	60	501994	1	Rafter Hook Assembly
25	501299	2	S.H.C.S. 1/4-20 x 1"	61	500513	1	Negator Assembly
26	091622	1	Reducing Pipe Bushing	62	500517	1	S.H.C.S. 10-32 x 2"
27	502075	1	End Cap, Housing	63	500518	1	S.H.C.S. 6-32 x 5/8"
*28	092042	1	O-Ring	64	500511	1	End Cap, Magazine
29	502084	1	W.C.E. Guide	65	500199	1	Spring
30	500525	1	Locknut, 5/16-24	66	500515	1	Latch
31	500516	1	B.H.C.S. 5/16 x 24 x 7/8"	67	404908	1	Bushing, Latch
32	502078	2	Label, Housing	68	502095	1	Model Label
33	071297	3	Roll Pin	69	501046	1	Drum Pin Assembly
34	501520	1	Spring, Valve Pin	**70	502092	1	Nameplate/Warning Label
35	097746	1	Valve Pin	71	500509	1	Front Bracket
36	401958	1	Valve Body	72	XH10831	1	Label, Sequential Cycle

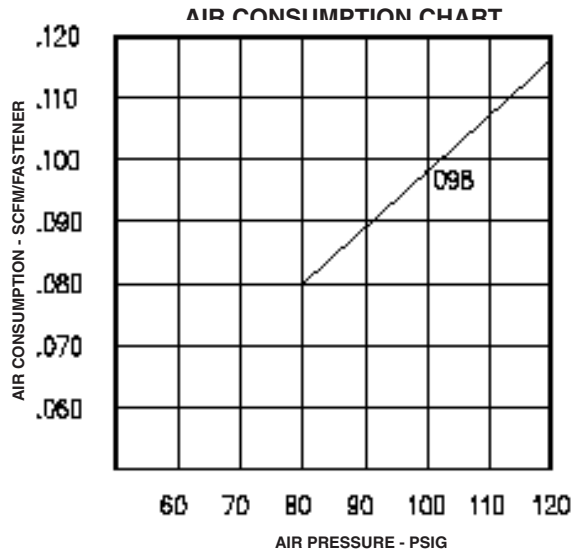
* Denotes Normal Wear Items

** Make sure Warning Label (Part No. 502092) is properly affixed. Replace if necessary. Label available at no charge through the Service Department.

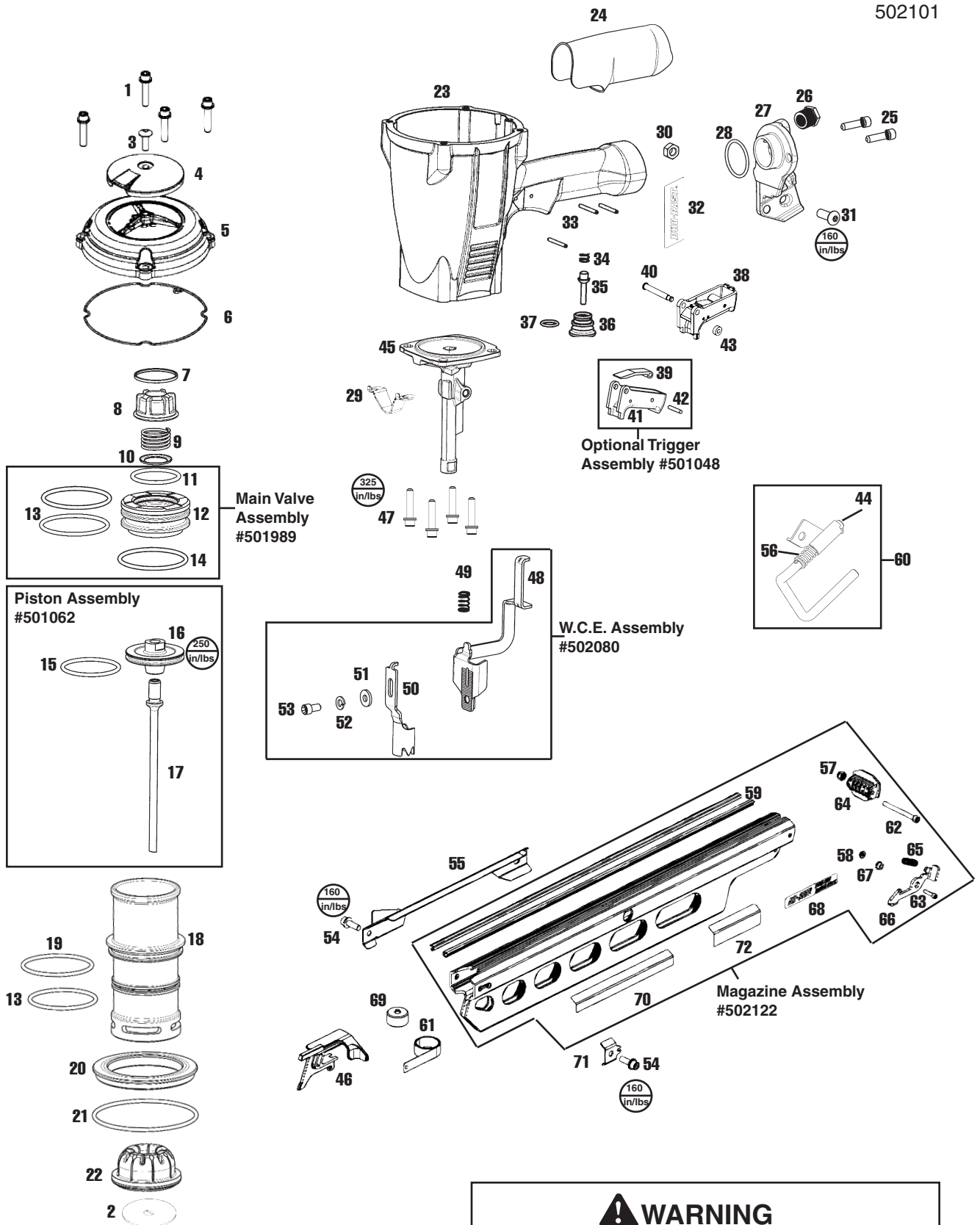
▲ Apply Loctite 242 (Blue) Part No. 093500

■ Apply Loctite 680 (Green) Part No. 401491

→ Denotes new changes



Note: For optimum performance Duo-Fast recommends the use of a 3/8" Male inlet fitting.



⚠ WARNING

All parts must be periodically inspected and replaced if worn or broken. Failure to do this can affect the tool's operation and present a safety hazard.

